

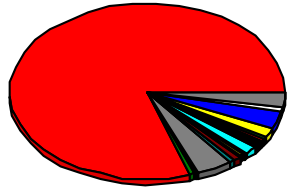


T.C.  
ÇORLU TİCARET BORSASI  
ANALİZ RAPORU

Tarih : 01.01.2021 ile 31.12.2021 Arasındaki Veriler..

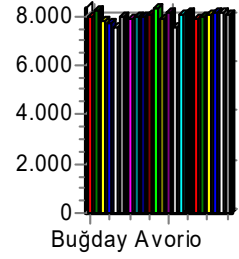
Mamul Cinsi	Toplam İşlem	Hektolitire			Rutubet			Gluten			Gluten Index			Sedimentasyon			Gecikmeli Sedim			Protein		
		Min	Max	Ort	Min	Max	Ort	Min	Max	Ort	Min	Max	Ort	Min	Max	Ort	Min	Max	Ort	Min	Max	Ort
Buğday	507	69.00	85.00	79.29	8.80	17.90	12.69	12.6	40.3	29.2	96	96	96	14	72	44	35	72	63	9	17	12.8
Flamura-85	3	81.00	83.00	82.00	11.60	15.80	13.13	25.3	31.1	29				29	48	41				11.1	13.6	12.7
Sagittario	1	78.00	78.00	78.00	12.10	12.10	12.10	26.1	26.1	26.1				31	31	31				11.5	11.5	11.5
Kate-a	1	77.00	77.00	77.00	14.30	14.30	14.30	33.5	33.5	33.5				54	54	54	60	60	60	14.6	14.6	14.6
Gelibolu	1	75.00	75.00	75.00	15.20	15.20	15.20	34	34	34				57	57	57	63	63	63	15.1	15.1	15.1
Esperia	26	77.00	83.00	79.30	10.10	15.50	12.42	22.3	36.1	27.9				23	71	44	47	72	63	9.8	16	12.2
Dropia	1	79.00	79.00	79.00	12.00	12.00	12.00	31.8	31.8	31.8				51	51	51				13.9	13.9	13.9
Ayçiçek	3	79.00	80.00	79.33	12.10	14.70	13.17	26.1	32.1	28.3				33	53	44	64	64	64	11.4	14	12.3
Kanola	1	80.00	80.00	80.00	11.10	11.10	11.10	33.2	33.2	33.2				56	56	56				14.5	14.5	14.5
Adelaide	5	78.00	81.00	80.40	11.30	15.40	12.92	22.7	29.8	24.7				20	44	27				10	13.1	10.9
Almeria	1	83.00	83.00	83.00	12.70	12.70	12.70	26.2	26.2	26.2				35	35	35				11.5	11.5	11.5
Andino	2	77.00	80.00	78.50	11.90	12.60	12.25	25.4	25.6	25.5				30	32	31				11.1	11.2	11.1
Avorio	2	80.00	82.00	81.00	11.20	12.30	11.75	26.9	28.9	27.9				38	45	42				11.8	12.7	12.3
Bora	2	70.00	80.00	75.00	12.30	15.00	13.65	35.3	35.6	35.5				62	72	67				15.4	16	15.7
Delabrad-2	9	77.00	83.00	80.11	10.30	14.80	12.30	25.4	33.7	29.4				44	59	48	48	64	57	11.1	14.7	12.9
Enola	9	80.00	82.00	81.11	11.10	13.10	11.91	23.3	30	26.1				23	43	32				10.2	13.1	11.4
Galateya	1	79.00	79.00	79.00	12.30	12.30	12.30	29.1	29.1	29.1				44	44	44				12.7	12.7	12.7
Genesi	5	76.00	82.00	79.60	11.20	12.30	11.80	25.2	30.3	27.2				29	44	35				11.1	13.3	12
Glosa	9	78.00	82.00	80.44	11.50	14.50	12.70	26.1	31.4	27.9				34	54	40	63	63	63	11.4	13.7	12.2
Maden	20	79.00	83.00	81.20	10.40	15.00	12.58	26.2	33.9	30				32	65	49	60	69	65	11.5	15	13.2
Rebelde	6	80.00	83.00	81.50	10.90	14.30	12.63	26.4	29.9	28.5				35	49	43				11.6	13.1	12.5
Rumeli	18	78.00	84.00	80.83	10.00	14.50	12.61	25.1	33.2	29.4				27	57	44	64	64	64	11	14.5	12.8

Mamul Cinslerinin Oransal Dağılımı



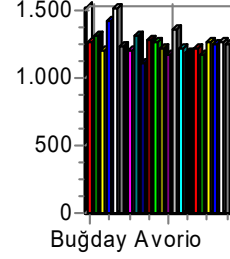
507 Buğday
3 Flamura-85
1 Sagittario
1 Kate-a
1 Gelibolu
26 Esperia
1 Drobia

Mamul Cinslerinin Hektolitre Dağılımı



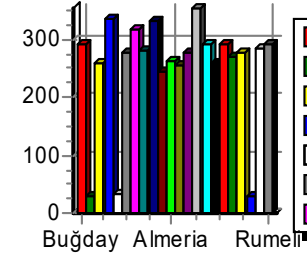
7.929 Buğday
8.200 Flamura-85
7.800 Sagittario
7.700 Kate-a
7.500 Gelibolu
7.930 Esperia
7.900 Drobia

Mamul Cinslerinin Rutubet Dağılımı



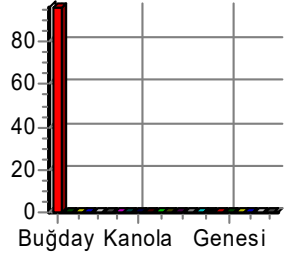
1.269 Buğday
1.313 Flamura-85
1.210 Sagittario
1.430 Kate-a
1.520 Gelibolu
1.242 Esperia
1.200 Drobia

Mamul Cinslerinin Gluten Dağılımı



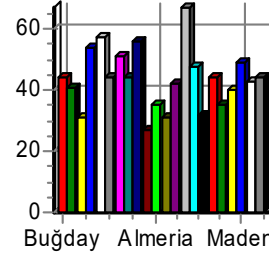
292 Buğday
29 Flamura-85
261 Sagittario
335 Kate-a
34 Gelibolu
279 Esperia
318 Drobia

Mamul Cinslerinin Gluten Index Dağılımı



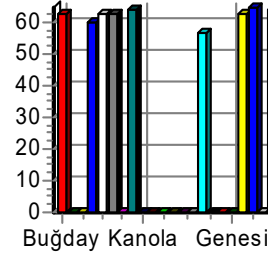
96 Buğday
0 Flamura-85
0 Sagittario
0 Kate-a
0 Gelibolu
0 Esperia
0 Drobia

Mamul Cinslerinin Sedim. Dağılımı



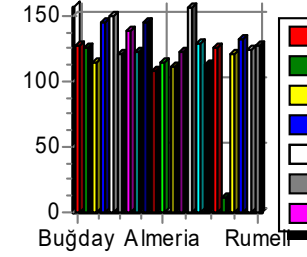
44 Buğday
41 Flamura-85
31 Sagittario
54 Kate-a
57 Gelibolu
44 Esperia
51 Drobia

Mamul Cinslerinin G. Sedim. Dağılımı



63 Buğday
0 Flamura-85
0 Sagittario
60 Kate-a
63 Gelibolu
63 Esperia
0 Drobia

Mamul Cinslerinin Protein Dağılımı



128 Buğday
127 Flamura-85
115 Sagittario
146 Kate-a
151 Gelibolu
122 Esperia
139 Drobia

Not :